

## ROOM THERMOSTATS

# ROOM THERMOSTAT SERIES TPx100

ESBE thermostat Series TPx100 consists of range of programmable electronic room thermostats for use in heating or cooling applications.



TPW114

### APPLICATION

The ESBE series TPx100 is a range of programmable ON/OFF electronic room thermostats for use in heating or cooling applications. The thermostats can be connected to 2-point or spring return actuator, a circulation pump or directly to the boiler.

### VERSIONS

- TPW114 is a weekly programmable electronic room thermostat for use in heating or cooling application, operating with 2\*AA (1,5V) batteries. The regulating temperature range is between 5°C and 40°C and has 3 individual operating modes, comfort, economic or antifrost/Off. The modes are activated by the 7 days program with 48 programmable periods each day. The thermostat can also be set in holiday mode from 1 hour up to 99 days. The display shows the measured temperature, the activated mode and if the relay is activated. Contact rating for the relay is 5(1)A@250V AC.

### TECHNICAL DATA

Ambient temperature: \_\_\_\_\_ max. 40°C  
\_\_\_\_\_ min. 0°C  
Ambient humidity: \_\_\_\_\_ 20...80% RH non-condensating  
Sensor type temperature: \_\_\_\_\_ NTC 10 kΩ@25°C  
Sensor type humidity: \_\_\_\_\_ SHT-21  
ErP Temperature controls class: \_\_\_\_\_ I  
Energy efficiency contribution: \_\_\_\_\_ 1%  
Enclosure rating: \_\_\_\_\_ IP30  
Contact rating: \_\_\_\_\_ 5(1)A @ 250V AC  
Voltage: \_\_\_\_\_ 2 x 1,5V LR6/AA  
Battery endurance: \_\_\_\_\_ >1 year  
Protection class: \_\_\_\_\_ II

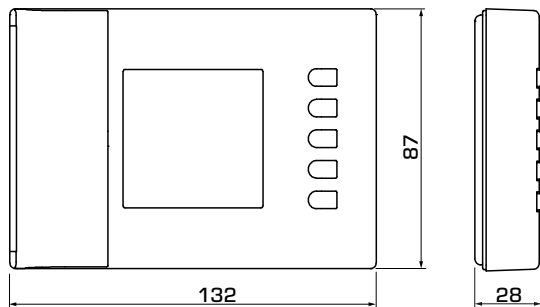
#### Material

Housing: \_\_\_\_\_ ABS + PC self-extinguishing VO

#### Conformities and certificates:

CE LVD 2014/35/EU  
EMC 2014/30/EU  
RoHS 2011/65/EU

# ROOM THERMOSTAT SERIES TPx100



TPW114

## SERIES TPx100

| Art. No. | Reference | Application        | Voltage     | Contact rating | Setting range | Weight [kg] | Note                |
|----------|-----------|--------------------|-------------|----------------|---------------|-------------|---------------------|
| 18002200 | TPW114    | Heating or cooling | 2*AA (1,5V) | 5(1)A@250V AC  | 5-40°C        | 0,17        | Weekly programmable |

## SUITABLE ESBE ACTUATORS

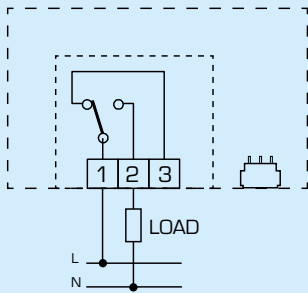
| Series        | Control signal | ARA600                                  | 90          | ARC300            | ARD100            | ARD200            | ALG400            | VZC/VZD | MBA100 | ZRS100 |
|---------------|----------------|---|-------------|-------------------|-------------------|-------------------|-------------------|---------|--------|--------|
| <b>TPx100</b> | 2-point        | ARA6x5,<br>ARA6x6,<br>ARA6x7,<br>ARA6x8 | M97,<br>M98 | ARC361,<br>ARC363 | ARD155,<br>ARD157 | ARD255,<br>ARD257 | ALG434,<br>ALG436 | •       | •      | •      |

# ROOM THERMOSTAT SERIES TPx100

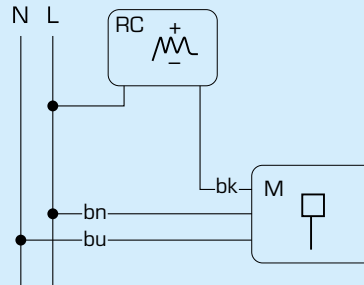
## WIRING

The wirings are typical examples of application; for further information, please check User instruction for all possibilities.

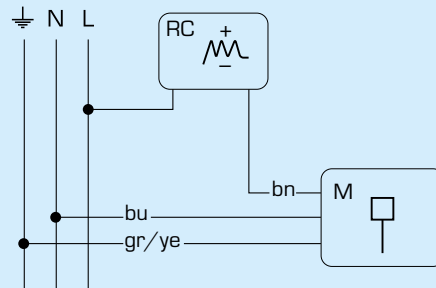
### TPW114



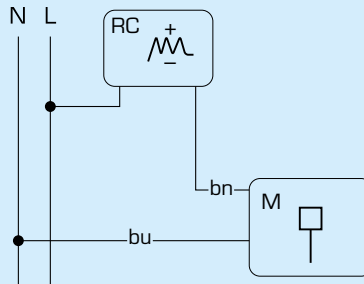
## ELECTRICAL CONNECTION TO ESBE ACTUATORS



Series ARA600, 90, ARC300, VZC/VZD, MBA100



Series ZRS100



Series ARD100, ARD200, ALG400