

ROOM THERMOSTATS

ROOM THERMOSTAT SERIES TPx200



TPW214

ESBE thermostat Series TPx200 is a wireless electronic room thermostat for use in heating or cooling applications.

APPLICATION

The ESBE series TPx200 is a wireless ON/OFF electronic room thermostat for use in heating or cooling applications. The thermostat can be connected to 2-point or spring return actuator, a circulation pump or directly to the boiler.

VERSIONS

TPW214 is a wireless weekly programmable electronic room thermostat for use in heating or cooling application, operating with 2*AA (1,5V) batteries. The regulating temperature range is between 5°C and 35°C and has 3 individual operating modes, comfort, economic or antifrost/Off. The modes are activated by the 7 days program with 48 programmable periods each day. The thermostat can also be set in holiday mode from 1 hour up to 99 days. The display shows the measured temperature, the activated mode and if the relay is activated.

TPW214 comes with a one-channel receiver TWR911, operating with 230V AC power supply. The receiver has LED light to indicate status and errors as well as a button for manually driving the output relay. Contact rating for the relay is 6(1)A@250V AC.

TECHNICAL DATA

Ambient temperature: _____ max. 40°C
 _____ min. 0°C
 Ambient humidity: _____ 20...80% RH non-condensating
 Sensor type: _____ NTC 4,7 kΩ@25°C
 ErP Temperature controls class: _____ I
 Energy efficiency contribution: _____ 1%
 Enclosure rating — Room thermostat: _____ IP30
 — Receiver: _____ IP4x
 Contact rating: _____ 6(1)A @ 250V AC
 Voltage, Room thermostat: _____ 2 x 1,5V LR6/AA
 Battery endurance: _____ >2,5 years
 Voltage, Receiver: _____ 230±10%V AC, 50Hz
 Power consumption: _____ 11W
 Radio frequency: _____ 868MHz
 Maximum receiver distance: _____ >300 meter in free air
 _____ >50 meter in buildings
 (dependent on the building and environment)
 Protection class: _____ II

Material
 Housing — Room thermostat: __ ABS + PC self-extinguishing VO
 — Receiver: _____ ABS self-extinguishing VO

Conformities and certificates:

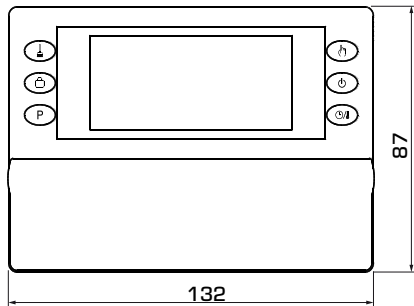
CE LVD 2014/35/EU
 EMC 2014/30/EU
 RoHS3 2015/863/EU
 RED 2014/53/EU



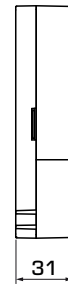
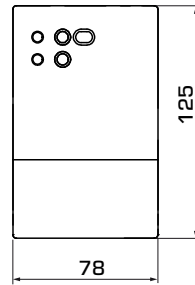
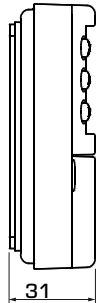
SUITABLE ESBE ACTUATORS

Series	Control signal	ARA600	90	ARC300	ARD100	ARD200	ALG400	VZC/VZD	MBA100	ZRS100
TPx200	2-point	ARA6x5, ARA6x6, ARA6x7, ARA6x8	M97, M98	ARC361, ARC363	ARD155, ARD157	ARD255, ARD257	ALG434, ALG436	•	•	•

ROOM THERMOSTAT SERIES TPx200



TPW214, Room thermostat



TWR911, Receiver

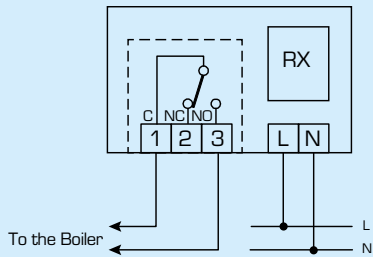
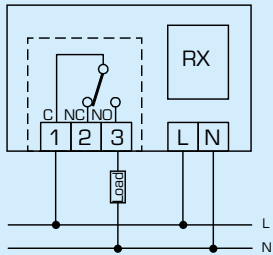
SERIES TPx200

Art. No.	Reference	Application	Voltage	Contact rating	Setting range	Weight [kg]	Note
18003300	TPW214	Heating or cooling	2*AA (1,5V)	6(1)A@250V AC	5-35°C	0,18+0,16	Weekly programmable

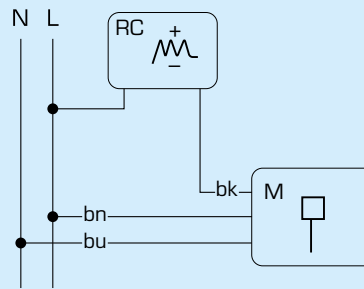
ROOM THERMOSTAT SERIES TPx200

WIRING

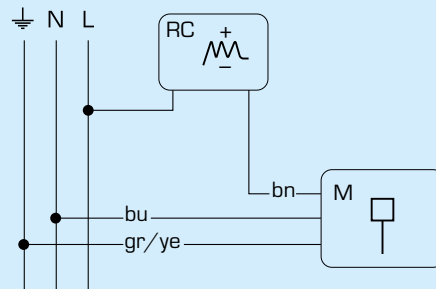
The wirings are typical examples of application; for further information, please check User instruction for all possibilities.



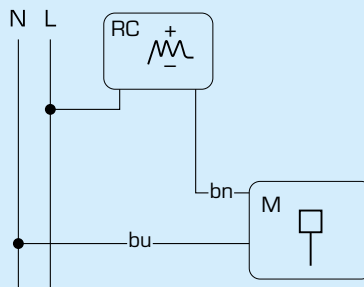
ELECTRICAL CONNECTION TO ESBE ACTUATORS



Series ARA600, 90, ARC300, VZC/VZD, MBA100



Series ZRS100



Series ARD100, ARD200, ALG400