

ACTUATOR SERIES ALG400

The ESBE Series ALG400 consists of thermo-electrical fan coil actuators suitable for the ESBE fan coil valves Series VLG100. The actuator is available in 24V AC/DC or 230V AC versions with 2-point or in 24V AC version with proportional control signal.

APPLICATION

The ESBE Series ALG400 is a thermo-electrical actuator suitable for fan coil valves such as ESBE Series VLG100 in both heating and cooling applications. The actuator has a force of 140N and an operating stroke of 2,5 mm. The actuator - valve assembly is easily made thanks to the threaded ring nut.

VERSIONS

The series consist of 3 versions:

- ALG434 with 2-point control signal, 110-230V AC power supply and 2 meter preassembled cable.
- ALG436 with 2-point control signal, 24V AC/DC power supply and 2 meter preassembled cable.
- ALG438 with proportional control signal (0-10V), 24V AC power supply and 2 meter preassembled cable.

All versions are assembled on the valve with a screw attachment (M30x1,5) that allows to assemble/disassemble the actuator in a secure, simple and rapid way. The actuators are provided with a yellow stroke indicator to indicate the valve position. When the power supply to the actuator is OFF the actuator spindle is moving upwards and the combination with ESBE fan coil valve VLG100 is a normally closed type (NC).



ALG434, ALG436

ALG438

SUITABLE VALVES

The ALG400 is easily assembled on the EBSE fan coil series VLG100.

TECHNICAL DATA

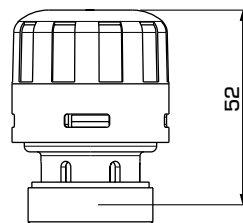
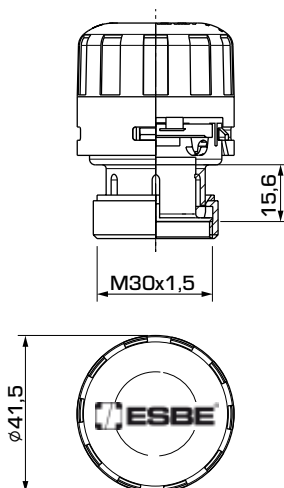
Ambient temperature: _____ max. 50°C
 _____ min. 2°C
 Enclosure rating: _____ IP 44 (vertical mounting)
 Protection class: _____ II
 Power supply, ALG434: _____ 110-230V AC, 50/60 Hz
 ALG436: _____ 24V AC, 50/60 Hz; 24V DC
 ALG438: _____ 24V AC, 50/60 Hz
 Power consumption - starting, ALG434: _____ 50W [230V]
 ALG434: _____ 12W [110V]
 ALG436: _____ 4W
 ALG438: _____ 5W
 Power consumption - operating: _____ 1,8W
 Control signal, ALG434/ALG436: _____ 2-point
 ALG438: _____ 0-10V DC
 Stroke: _____ 2,5 mm
 Force: _____ 140 N
 Weight, ALG434/ALG436: _____ 0,15 kg
 ALG438: _____ 0,17 kg
 Material: _____ Technopolymer case self-extinguishing VO

CE LVD 2014/35/EU
 EMC 2014/30/EU
 RoHS3 2015/863/EU

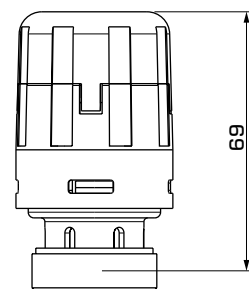
UK CA SI 2016 No. 1101
 SI 2016 No. 1091
 SI 2012 No. 3032

WIRING

Please see the Installation Instruction



ALG434 / ALG436



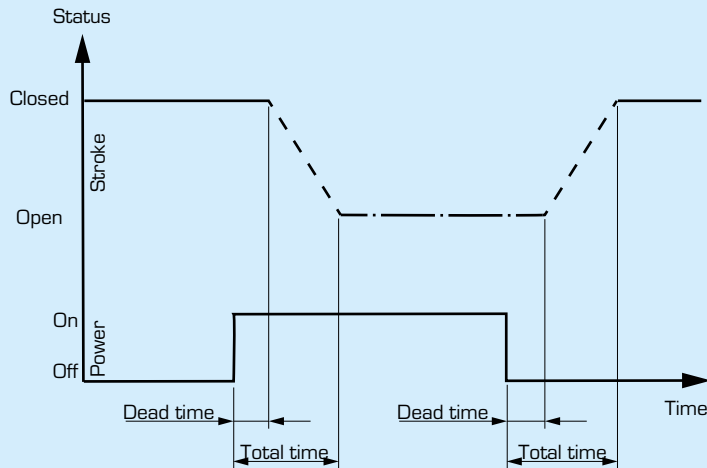
ALG438

SERIES ALG400

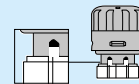
| Art. No. | Reference | Supply voltage | Control signal | Force [N] | Stroke [mm] | Running time [s] | Note |
|----------|-----------|----------------|----------------|-----------|-------------|------------------|------|
| 22500100 | ALG434 | 110-230V AC | 2-point | 140 | 2,5 | see table | |
| 22500200 | ALG436 | 24V AC/DC | | | | | |
| 22500300 | ALG438 | 24V AC | Proportional | 140 | 2,5 | see table | |

ACTUATOR SERIES ALG400

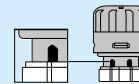
RUNNING TIME



Closed position
Valve stem up



Open position
Valve stem down



Actuator timing details (approx.)

| Actuator | Voltage [V] | Valve opening | | Valve closing (after 5 minutes power on) | | Valve closing (after 30 minutes power on) | |
|---------------|-------------|---------------|----------------|--|----------------|---|----------------|
| | | Dead time [s] | Total time [s] | Dead time [s] | Total time [s] | Dead time [s] | Total time [s] |
| ALG434 | 230 | 80 | 230 | 180 | 390 | 150 | 400 |
| | 110 | 100 | 380 | 80 | 330 | 80 | 330 |
| ALG436/ALG438 | 24 | 150 | 400 | 180 | 390 | 150 | 400 |

LINEAR MOTORIZED VALVES

ACTUATOR SERIES ALG400