

ROTARY MOTORIZED VALVES  
**MIXING VALVE**  
**SERIES T, TM**

ESBE 4-way valves Series T and TM are specially designed for factory fitting to boilers. 4T, DN20, cast iron, PN 6. Internal thread. 4TM, DN 20, brass, PN 10. Compression fittings.



**OPERATION**

The T/TM valves have the two ports for the boiler side in a single flange.

The T/TM valves have a double mixing function, i.e. a proportion of the hot water supplied from the boiler is mixed with the return water. This results in a higher return water temperature reducing the risk of corrosion and assuring a longer life for the boiler. They are designed to provide good control characteristics and reliability in operation.

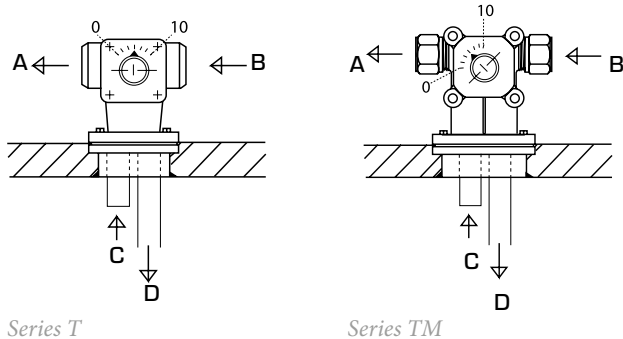
The valves can be equipped with ESBE actuators series ARA600 and series 90. The valves may also be equipped with ESBE controllers series CRA210, CRB200 and CRC210. Valves series TM may also be equipped with controllers series 90C.

**SERVICE AND MAINTENANCE**

All major parts are replaceable. The shaft seal consist of two o-rings, one of which can be replaced without the need for draining down the system or dismantling the valve. However, before doing so, the system must be depressurized.

**TYPICAL INSTALLATION**

A = riser                      B = return  
 C = riser, boiler            D = return to boiler  
 The scale plate is printed on both sides allowing inverted installation.



**VALVE T/TM DESIGNED FOR**

- Heating

**SUITABLE ACTUATORS AND CONTROLLERS**

- Series ARA600
- Series 90
- \* Not series T
- Series 90C \*
- Series CRC210
- Series CRB200
- Series CRA210

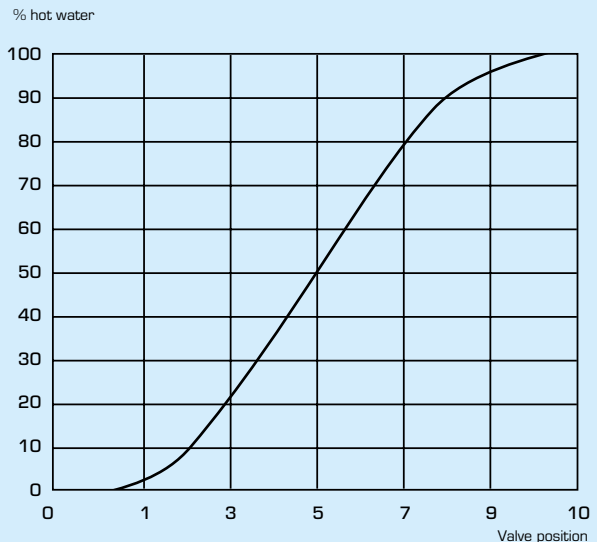
**TECHNICAL DATA**

Pressure class: \_\_\_\_\_ Series T, PN 6  
 \_\_\_\_\_ Series TM, PN 10  
 Temperature: \_\_\_\_\_ max. 110°C  
 \_\_\_\_\_ min. - 10°C  
 Operation angle: \_\_\_\_\_ 90°  
 Torque: \_\_\_\_\_ Series T, 5 Nm  
 \_\_\_\_\_ Series TM, 3 Nm  
 Leakrate in % of flow: \_\_\_\_\_ max. 1,5%  
 Connections: \_\_\_\_\_ Internal thread, EN 10226-1  
 \_\_\_\_\_ Compression fitting, EN 1254-2

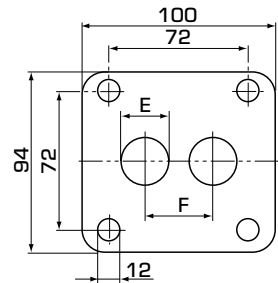
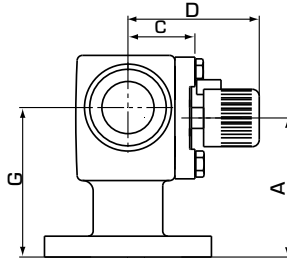
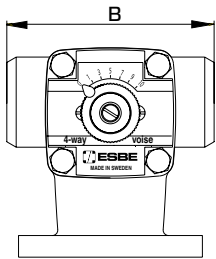
Material  
 Body: Series T \_\_\_\_\_ Cast iron EN-JL 1030  
 Series TM \_\_\_\_\_ Brass CW 614N  
 Slide/Spindle: \_\_\_\_\_ Brass CW 614N  
 Bushing: \_\_\_\_\_ Plastic  
 Cover plate: \_\_\_\_\_ Zinc  
 O-rings: \_\_\_\_\_ EPDM

PED 2014/68/EU, article 4.3

**VALVE CHARACTERISTICS**



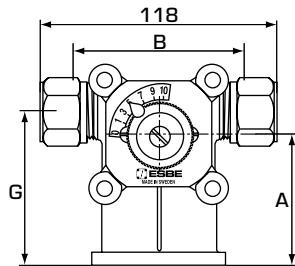
# MIXING VALVE SERIES T, TM



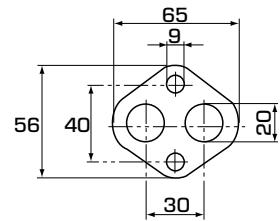
## SERIES T, INTERNAL THREAD

Art. No.	Reference	DN	Kvs*	Connection	A	B	C	D	E	F	G	Weight [kg]
11300900	T 20	20	8	Rp 3/4"	80	115	39	76	20	35	86	2,7

\* Kvs-value in m<sup>3</sup>/h at a pressure drop of 1 bar. Flow chart, see product catalogue.



Art. No. 11300700



Flange

## SERIES TM, COMPRESSION FITTING

Art. No.	Reference	DN	Kvs*	Connection	A	B	C	D	G	Note	Weight [kg]
11300700	TM 20	20	5,5	CPF 22 mm	64	85	39	76	75		1,14

\* Kvs-value in m<sup>3</sup>/h at a pressure drop of 1 bar. Flow chart, see product catalogue. CPF = compression fitting