



www.esbe.eu



RED 2014/53/EU
RoHS 2011/65/EU



DECLARATION OF CONFORMITY - CRU100
<http://www.esbe.eu/global/en/support/download-documents> (Certificates)



DECLARATION OF CONFORMITY

We ESBE AB
Bruksgatan 22
SE-333 75 Reftele
Sweden

Declares with our sole responsibility that the product(s):

Product group: Controllers
Type: CRU100
Denomination: CRU111

is/are in conformity with provisions of the following directive(s)

CE 2011/65/EC Hazardous Substances Directive (RoHS2)
2014/53/EU Radio Equipment Directive (RED)

The conformity was assessed in accordance with the following standard(s)

EN 50581:2012 Technical documentation for the assessment of electrical and electronic products with respect to the restriction of hazardous substances
ETSI EN 301 480-17 V3.2.0 Electromagnetic compatibility
ETSI EN 300 328 V2.1.1 Wideband transmission systems

ESBE AB is certified according to requirements of management systems:

DIN EN ISO 9001: Quality Management
DIN EN ISO 14001: Environmental Management

Reftele, October 31st, 2018
(Date of issue of this)

Mr Peter Cerny
Managing Director

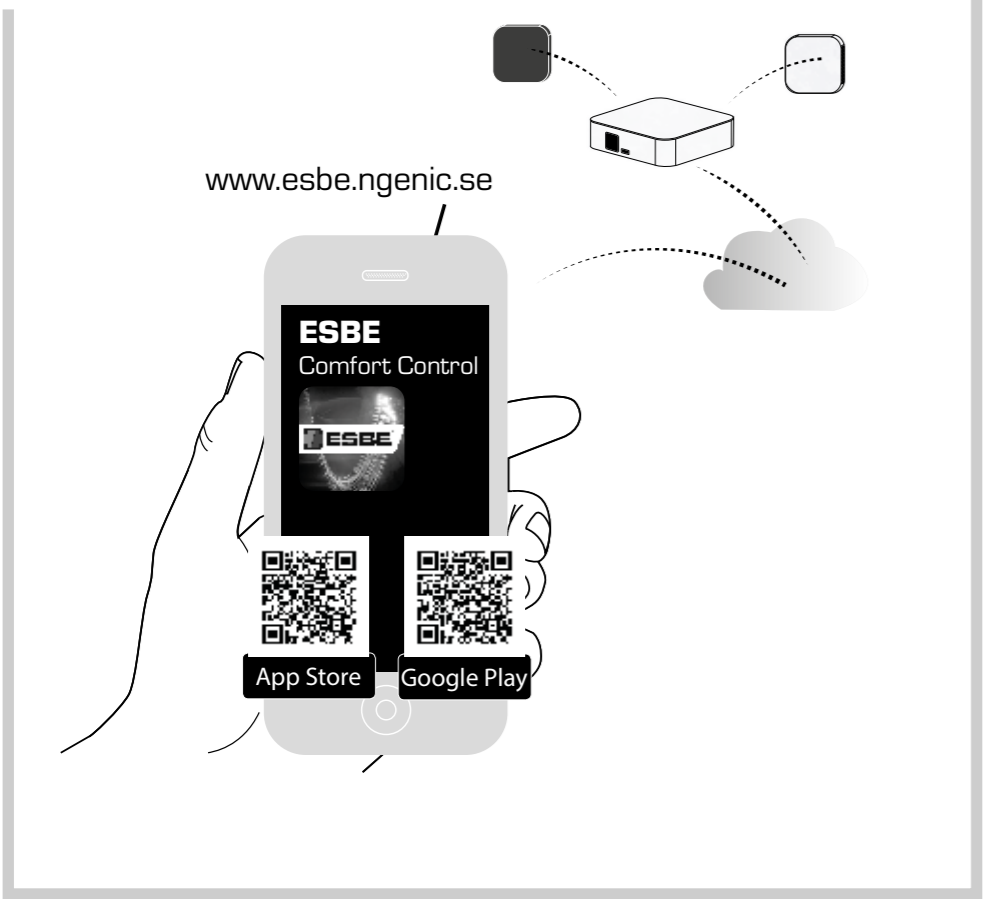


SERIES
CRE100 • CRF100 • CRU100

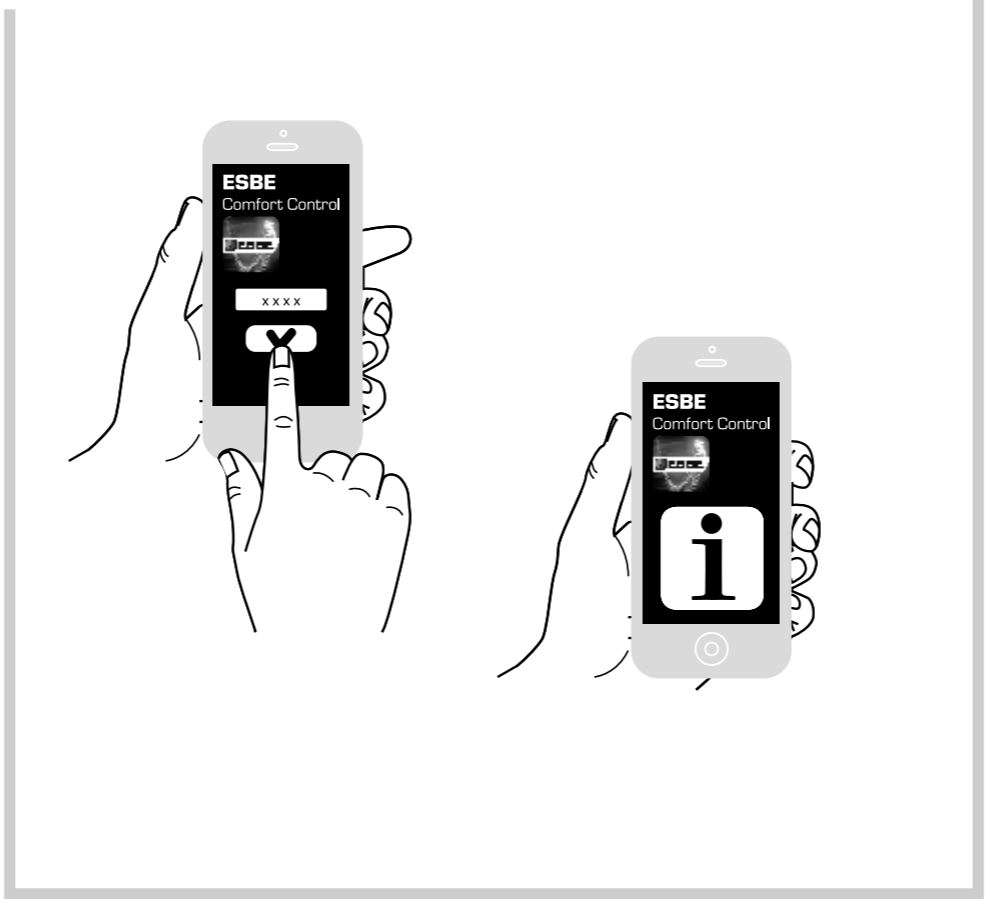


POWERED BY
NGENIC TUNE

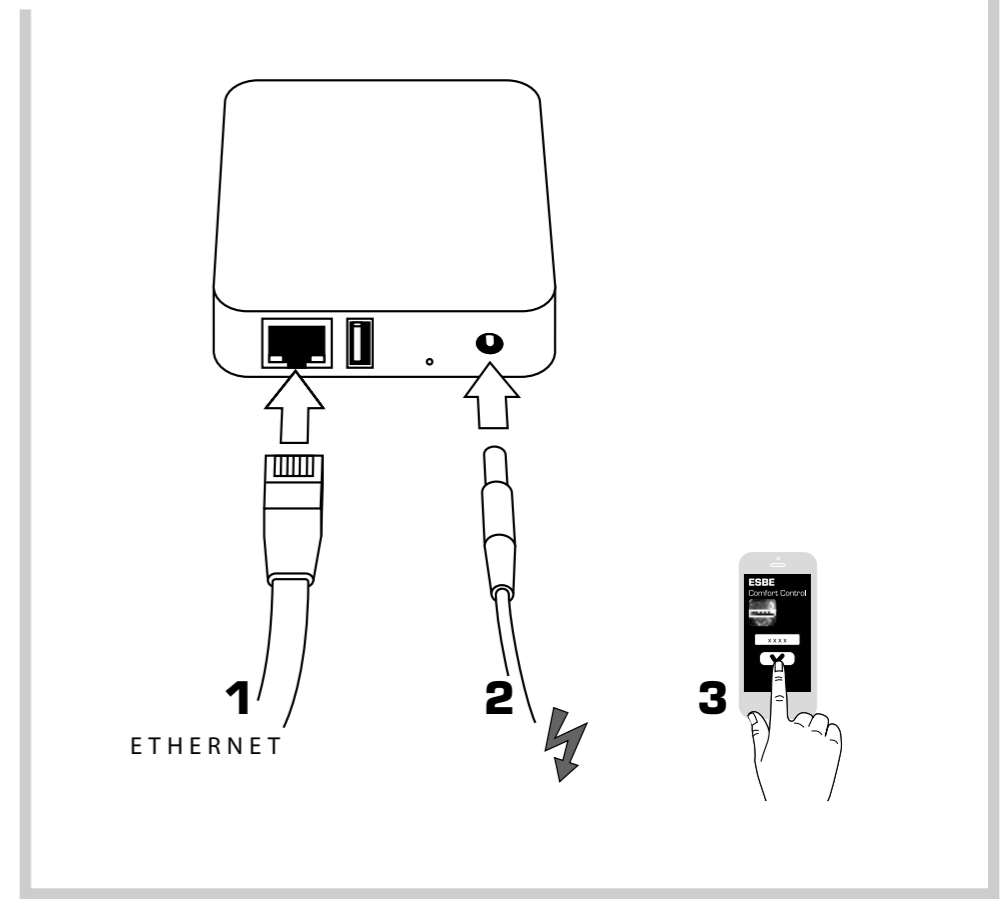
1



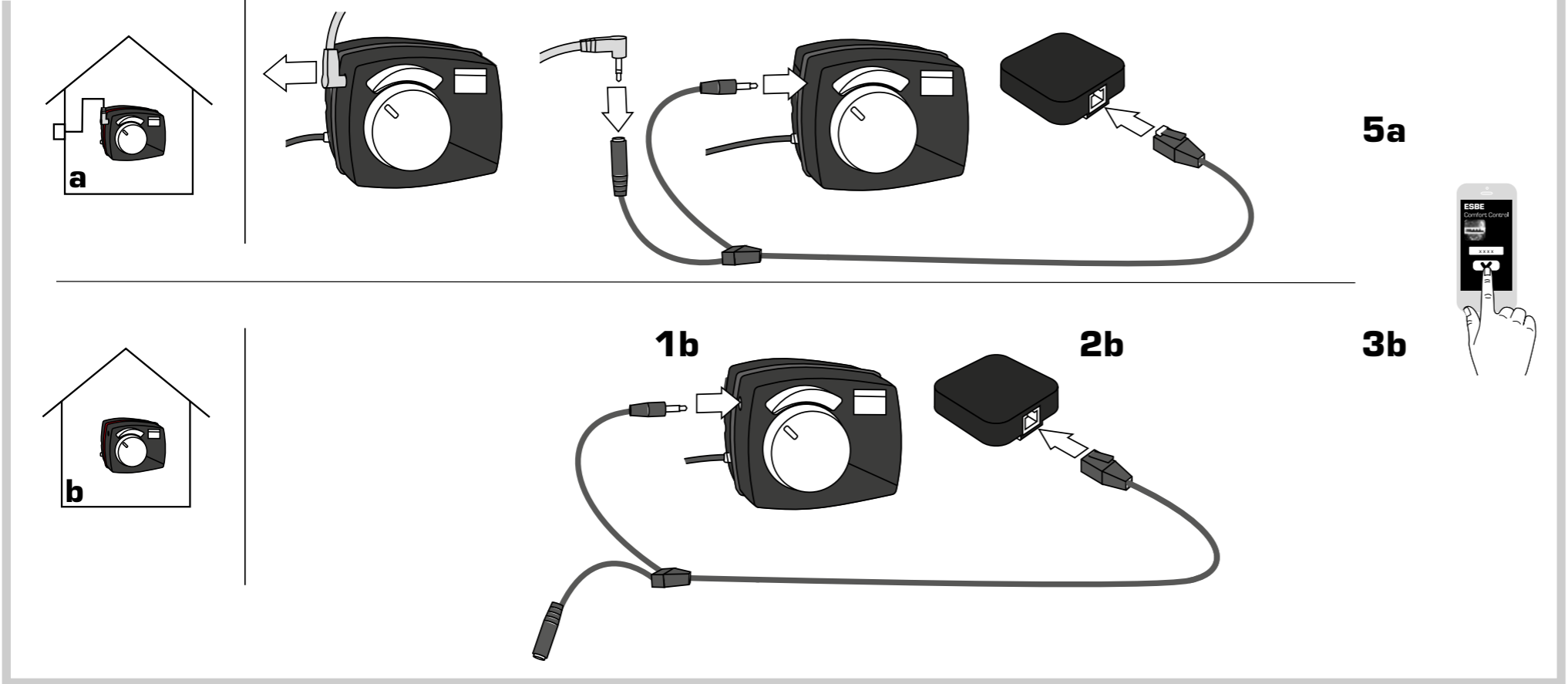
2



3



4



5

