

ROOM THERMOSTATS

ROOM THERMOSTAT SERIES TPx100

ESBE thermostat Series TPx100 consists of range of programmable electronic room thermostats for use in heating or cooling applications.



TPD112

TPW114

APPLICATION

The ESBE series TPx100 is a range of programmable ON/OFF electronic room thermostats for use in heating or cooling applications. The thermostats can be connected to 2-point or spring return actuator, a circulation pump or directly to the boiler.

VERSIONS

The series consist of 2 different versions:

- TPD112 is a daily programmable electronic room thermostat for use in heating or cooling application, operating with 2*AA (1,5V) batteries. The regulating temperature range is between 10°C and 30°C and has 3 individual operating modes, comfort, economic or antifrost/Off. The comfort and economic mode are activated by 24 switches on the front cover, antifrost/Off mode is activated by a button of the front cover. The display shows the measured temperature, the activated mode and if the relay is activated. Contact rating for the relay is 5(1)A@250V AC.
- TPW114 is a weekly programmable electronic room thermostat for use in heating or cooling application, operating with 2*AA (1,5V) batteries. The regulating temperature range is between 5°C and 40°C and has 3 individual operating modes, comfort, economic or antifrost/Off. The modes are activated by the 7 days program with 48 programmable periods each day. The thermostat can also be set in holiday mode from 1 hour up to 99 days. The display shows the measured temperature, the activated mode and if the relay is activated. Contact rating for the relay is 5(1)A@250V AC.

TECHNICAL DATA

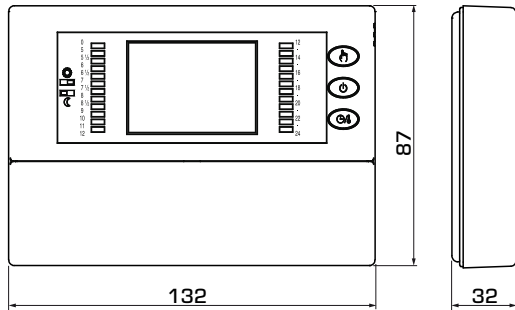
Ambient temperature: _____ max. 40°C
_____ min. 0°C
Ambient humidity: _____ 20..80% RH non-condensating
Sensor type temperature – TPx100: _____ NTC 10 kΩ@25°C
Sensor type humidity – TPH114: _____ SHT-21
ErP Temperature controls class: _____ I
Energy efficiency contribution: _____ 1%
Enclosure rating: _____ IP30
Contact rating: _____ 5(1)A @ 250V AC
Voltage: _____ 2 x 1,5V LR6/AA
Battery endurance: _____ >1 year
Protection class: _____ II

Material
Housing: _____ ABS + PC self-extinguishing VO

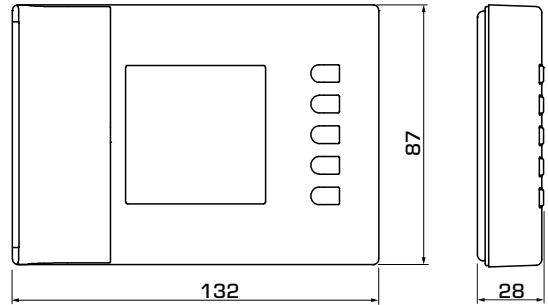
Conformities and certificates:

CE LVD 2014/35/EU
EMC 2014/30/EU
RoHS 2011/65/EU

ROOM THERMOSTAT SERIES TPx100



TPD112



TPW114

SERIES TPx100

Art. No.	Reference	Application	Voltage	Contact rating	Setting range	Weight [kg]	Note
18002100	TPD112	Heating or cooling	2*AA (1,5V)	5(1)A@250V AC	10-30°C	0,18	Daily programmable
18002200	TPW114				5-40°C		Weekly programmable

SUITABLE ESBE ACTUATORS

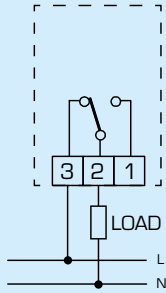
Series	Control signal	ARA600	90	ARC300	ARD100	ARD200	ALG400	VZC/VZD	MBA100	ZRS100
TPx100	2-point	ARA6x5, ARA6x6, ARA6x7, ARA6x8	M97, M98	ARC361, ARC363	ARD155, ARD157	ARD255, ARD257	ALG434, ALG436	•	•	•

ROOM THERMOSTAT SERIES TPx100

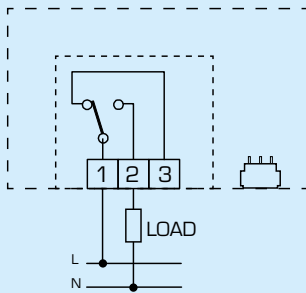
WIRING

The wirings are typical examples of application; for further information, please check User instruction for all possibilities.

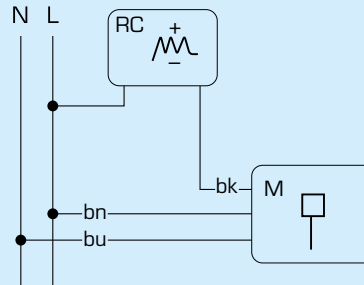
TPD112



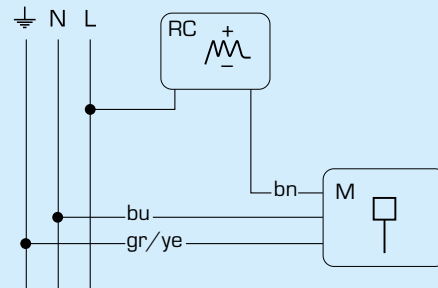
TPW114



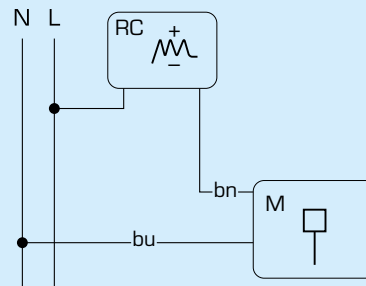
ELECTRICAL CONNECTION TO ESBE ACTUATORS



Series ARA600, 90, ARC300, VZC/VZD, MBA100



Series ZRS100



Series ARD100, ARD200, ALG400