

# MIXING VALVE SERIES HG

ESBE mixing valves Series HG are designed for installations where space is limited.  
– 3HG/4HG, DN25, cast iron, PN10. Union connections.

## OPERATION

ESBE mixing valve series HG have connections in an H configuration. The upward connections are for radiator circuits and the downward connections are for boiler connection.

The HG series have union connections. The integrated bypass has an adjustable flow with a maximum 50% total capacity of the valve.

The valves can be equipped with ESBE actuators series ARA600 and series 90. The valves may also be equipped with ESBE controllers series CRx100 and 90C.

## SERVICE AND MAINTENANCE

All major parts are replaceable. The shaft seal consist of two o-rings, one of which can be replaced without the need for draining down the system or dismantling the valve. However, before doing so, the system must be depressurized.



**3HG**  
External thread/Union connections



**4HG**  
External thread/Union connections

## VALVE HG DESIGNED FOR

- Heating

## SUITABLE ACTUATORS AND CONTROLLERS

- Series ARA600
- Series 90C
- Series 90
- Series CRD100
- Series CRC110, CRC140
- Series CRB100
- Series CRA110, CRA140, CRA150

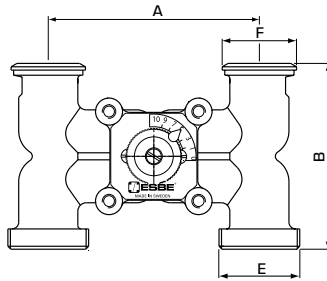
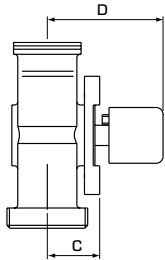
## TECHNICAL DATA

Pressure class: \_\_\_\_\_ PN 10  
 Temperature: \_\_\_\_\_ max. 110°C  
 \_\_\_\_\_ min. - 10°C  
 Differential pressure drop: \_\_\_\_\_ max. 50 kPa  
 Torque: \_\_\_\_\_ 5 Nm  
 Leakrate in % of flow: \_\_\_\_\_ max. 1%  
 Connections: \_\_\_\_\_ External thread, ISO 228/1

Material  
 Body: \_\_\_\_\_ Cast iron EN-JL 1030  
 Slide/Spindle: \_\_\_\_\_ Brass CW 614N  
 Bushing: \_\_\_\_\_ Plastic  
 Cover plate: \_\_\_\_\_ Zinc  
 O-rings: \_\_\_\_\_ EPDM

PED 2014/68/EU, article 4.3

# MIXING VALVE SERIES HG



## SERIES 3HG, EXTERNAL THREAD

Art. No.	Reference	DN	Kvs *	Connection		A	B	C	D	Weight [kg]	Note
				E	F						
11351200	3HG25-125	25	10	G 1½"	PF 1½"	125	110	38	76	2,2	1), 2)

## SERIES 4HG, EXTERNAL THREAD

Art. No.	Reference	DN	Kvs *	Connection		A	B	C	D	Weight [kg]	Note
				E	F						
11350100	4HG25-90	25	8	G 1½"	PF 1½"	90	110	38	76	1,5	1)
11350200	4HG25-125	25	6,3	G 1½"	PF 1½"	125	110	38	76	1,8	1)
11351100			10							2,2	1), 2)

\*Kvs-value in m<sup>3</sup>/h at a pressure drop of 1 bar. Flow chart, see product catalogue.  
Note 1) Male thread for union connections 2) With By-pass

ROTARY MOTORIZED VALVES  
**MIXING VALVE**  
**SERIES HG**

**DIMENSIONING**

**HEATING SYSTEMS (RADIATOR OR UNDERFLOOR HEATING SYSTEMS)**

Start with the heat demand in kW (e.g. 25 kW) and move vertically to the chosen  $\Delta t$  (e.g. 15°C).

Move horizontally to the shaded field (pressure drop of 3-15 kPa) and select the smaller Kvs-value (e.g. 6,3).  
 A mixing valve with suitable Kvs-value will be found in

respective product description.

**OTHER APPLICATIONS**

Make sure maximum  $\Delta P$  is not exceeded.

